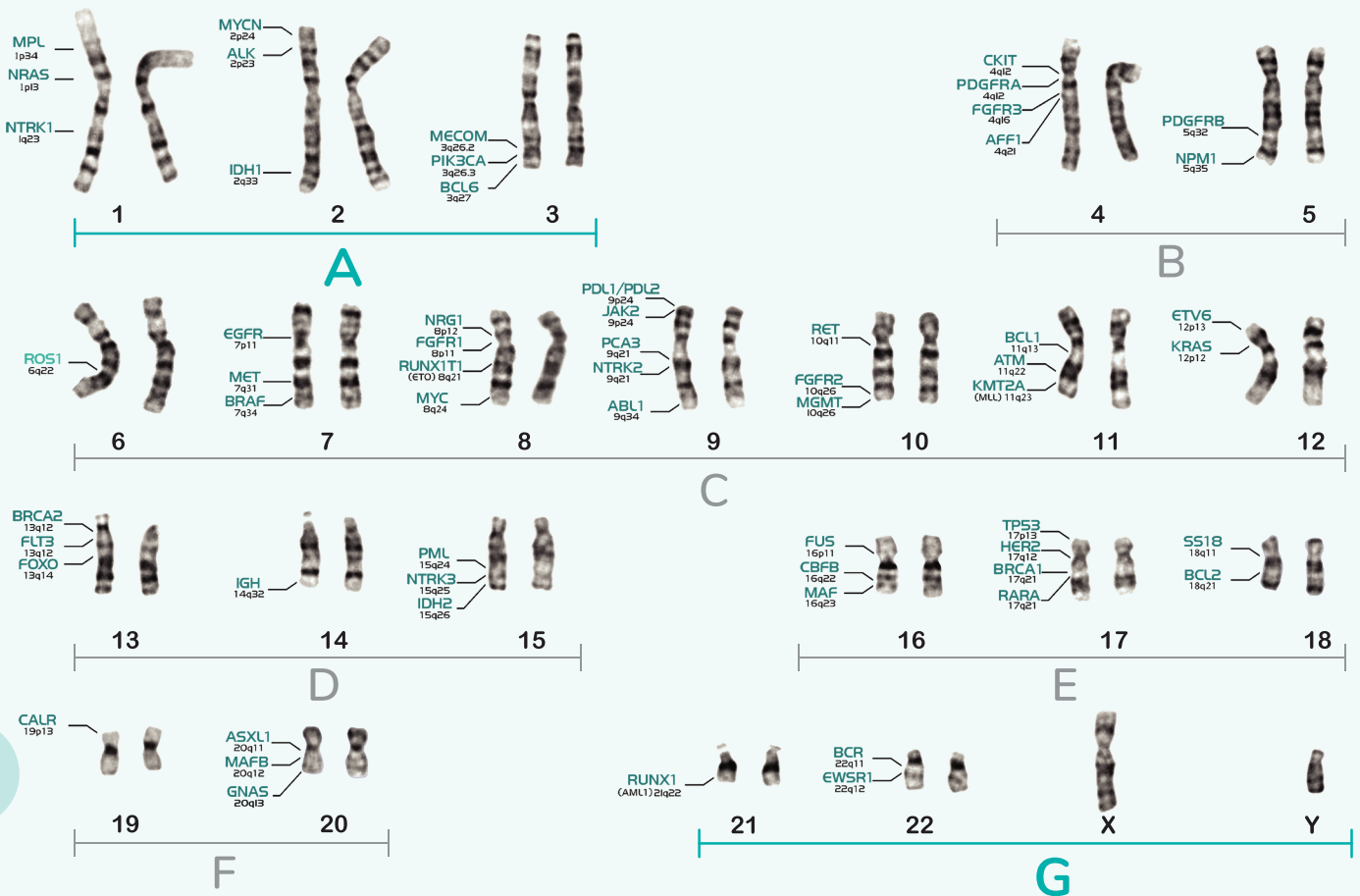


ATCG

A TO G LABORATORY

ALL TESTS OF GENETICS



OUR INHOUSE GENETIC TESTS MENU INCLUDES:

- High Resolution constitutional Karyotyping
- Prenatal Amniocentesis Karyotyping
- Rare Microdeletion Syndromes
- Duchenne muscular dystrophy (DMD), Spinal muscular atrophy (SMA) post/prenatal genetic testing
- Leukemia / Lymphoma Karyotyping
- Leukemia / Lymphoma FISH panels
- Solid Tumor Comprehensive Gene Panel by NGS
- FDA Approved HER2 neu testing for breast and mCRC
- Inherited Cancer Gene panel by NGS
- BRCA1/2 Somatic and Germline testing
- MSI Microsatellite instability for Solid Tumors
- Tumor Mutational Burden TMB for Solid Tumors
- Bladder cancer Non-invasive genetic testing
- Cancer genetic testing for targeted therapy
- Liquid Biopsy
- Pharmacogenetics: DPYD genotyping for 5 fluorouracil treatment. And TPMT genotyping for thiopurine treatment
- NIPT Non Invasive Prenatal Testing
- DNA sequencing
- PGT-M (PGD) thalassemia, Cystic Fibrosis, sickle cell Anemia, PKU, DMD, SMA and more including Parental translocations
- PGT-A (PGS) 24 chromosomes by NGS
- CGH Comparative genomic hybridization
- NGS
- Clinical Exome Sequencing
- SARS CoV2 Genotyping by NGS

SAME DAY RESULTS TESTS:

- Philadelphia Chromosome t(9;22) for CML patients by FISH
- PML-RARA t(15;17) for AML patients by FISH
- Trisomy 21 Down Syndrome prenatal detection
- NIPT (X,Y,21,13,18) on maternal Blood
- NIPT SRY
- NIPT RH
- And many more ...

Our SEND-OUT GENETIC TESTS MENU

- None